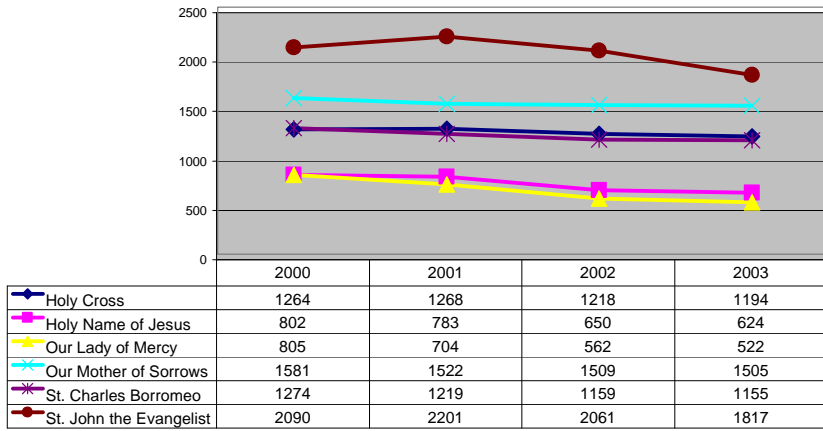


Use the expand tool to magnify the table and charts. Use the graphics selection tool to print out a chart as a full sheet.

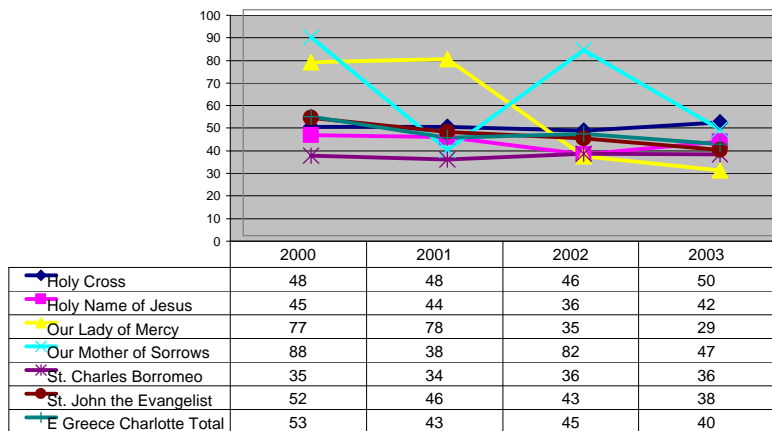
Eastern Greece-Charlotte Mass Counts

Parish	2000 # Masses	2000 Capacity	2000 Potential	2000 Ave Attend	2000 Capacity Used	2001 # Masses	2001 Capacity	2001 Potential	2001 Ave Attend	2001 Capacity Used	2002 # Masses	2002 Capacity	2002 Potential	2002 Ave Attend	2002 Capacity Used	2003 # Masses	2003 Capacity	2003 Potential	2003 Ave Attend	2003 Capacity Used
Holy Cross	5	525	2625	1264	48	5	525	2625	1268	48	5	525	2625	1218	46	5	475	2375	1194	50
Holy Name of Jesus	3	600	1800	802	45	3	600	1800	783	44	3	600	1800	650	36	3	500	1500	624	42
Our Lady of Mercy	3	350	1050	805	77	3	300	900	704	78	3	535	1605	562	35	3	600	1800	522	29
Our Mother of Sorrows	4	450	1800	1581	88	4	1000	4000	1522	38	4	459	1836	1509	82	4	800	3200	1505	47
St. Charles Borromeo	4	900	3600	1274	35	4	900	3600	1219	34	4	800	3200	1159	36	4	800	3200	1155	36
St. John the Evangelist	4	1000	4000	2090	52	4	1200	4800	2201	46	4	1200	4800	2061	43	4	1200	4800	1817	38
E Greece Charlotte Total	23	3825	14875	7817	53	23	4525	17725	7696	43	23	4119	15866	7158	45	23	4375	16875	6816	40

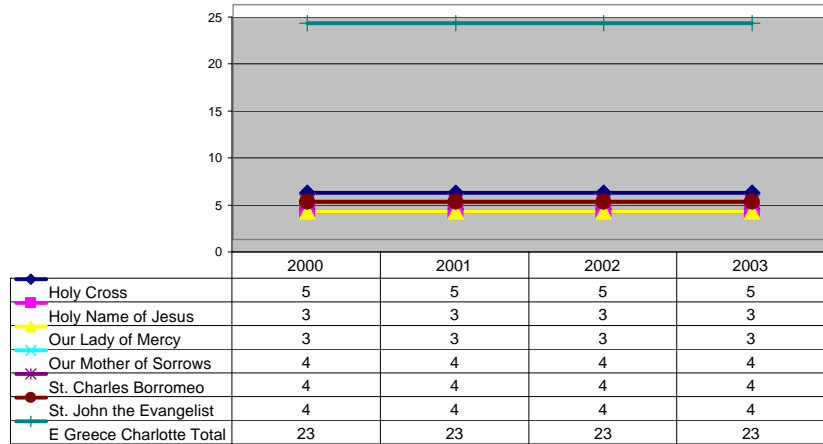
Average Weekend Mass Attendance



Ave Worship Capacity Used (Percent)



Number of Masses



Change in Ave Weekend Attendance (2000=100)

