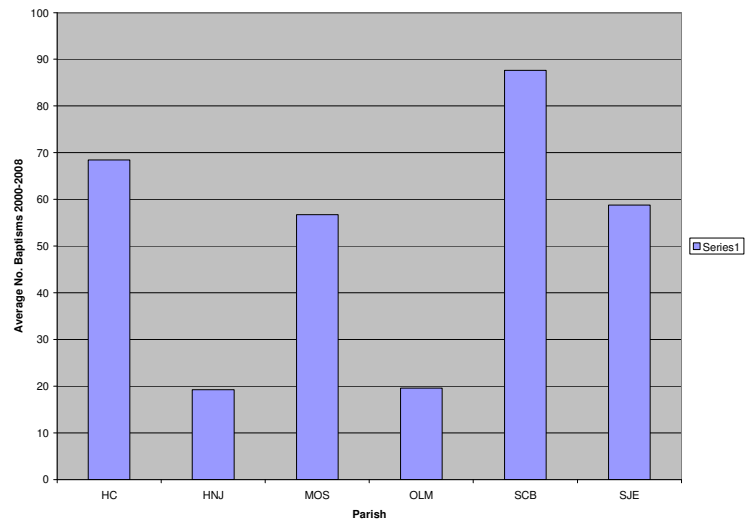


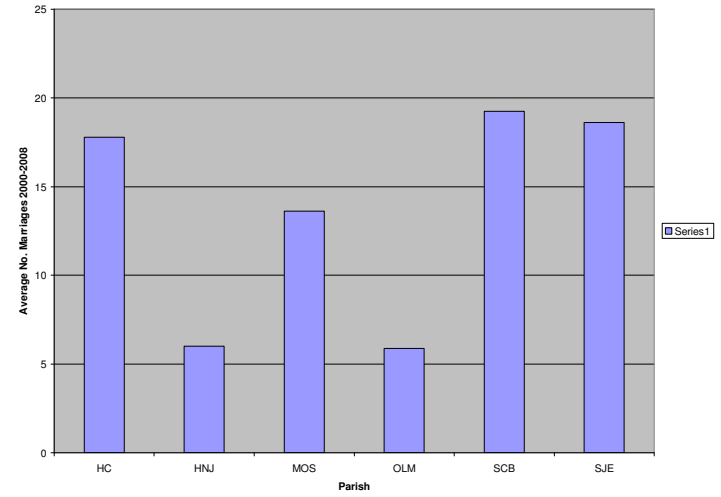
# **EGC Sacramental Information**

**2000-2008**

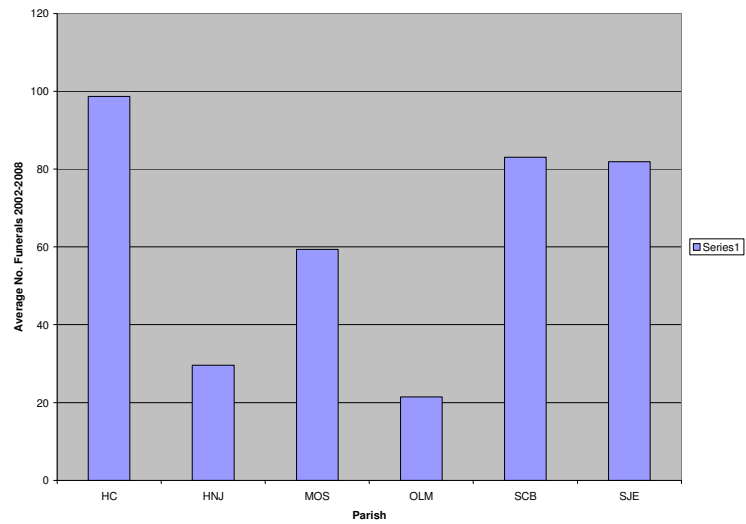
Baptisms by Parish



Marriages by Parish

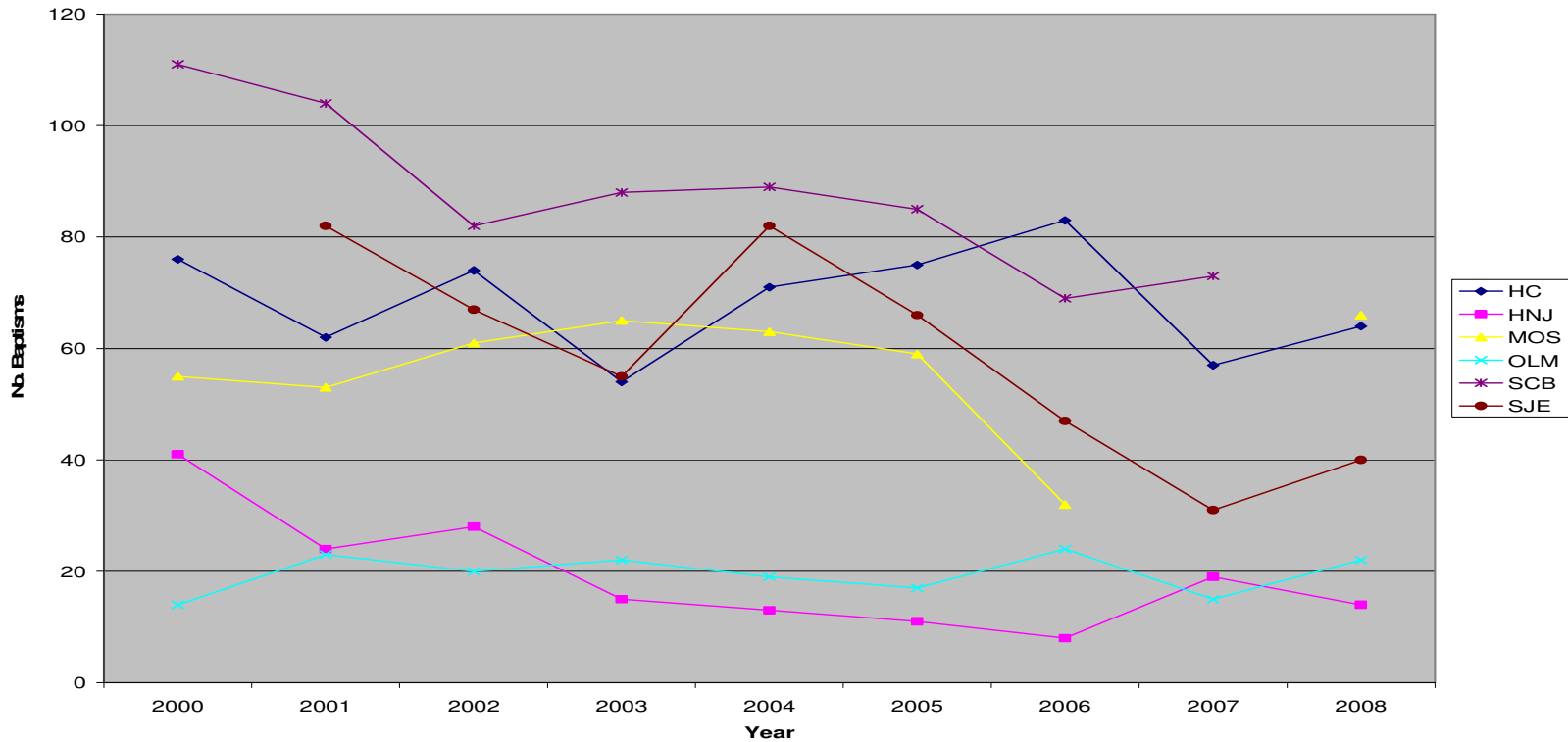


Funerals by Parish





**Baptisms by Parish 2000-2008**

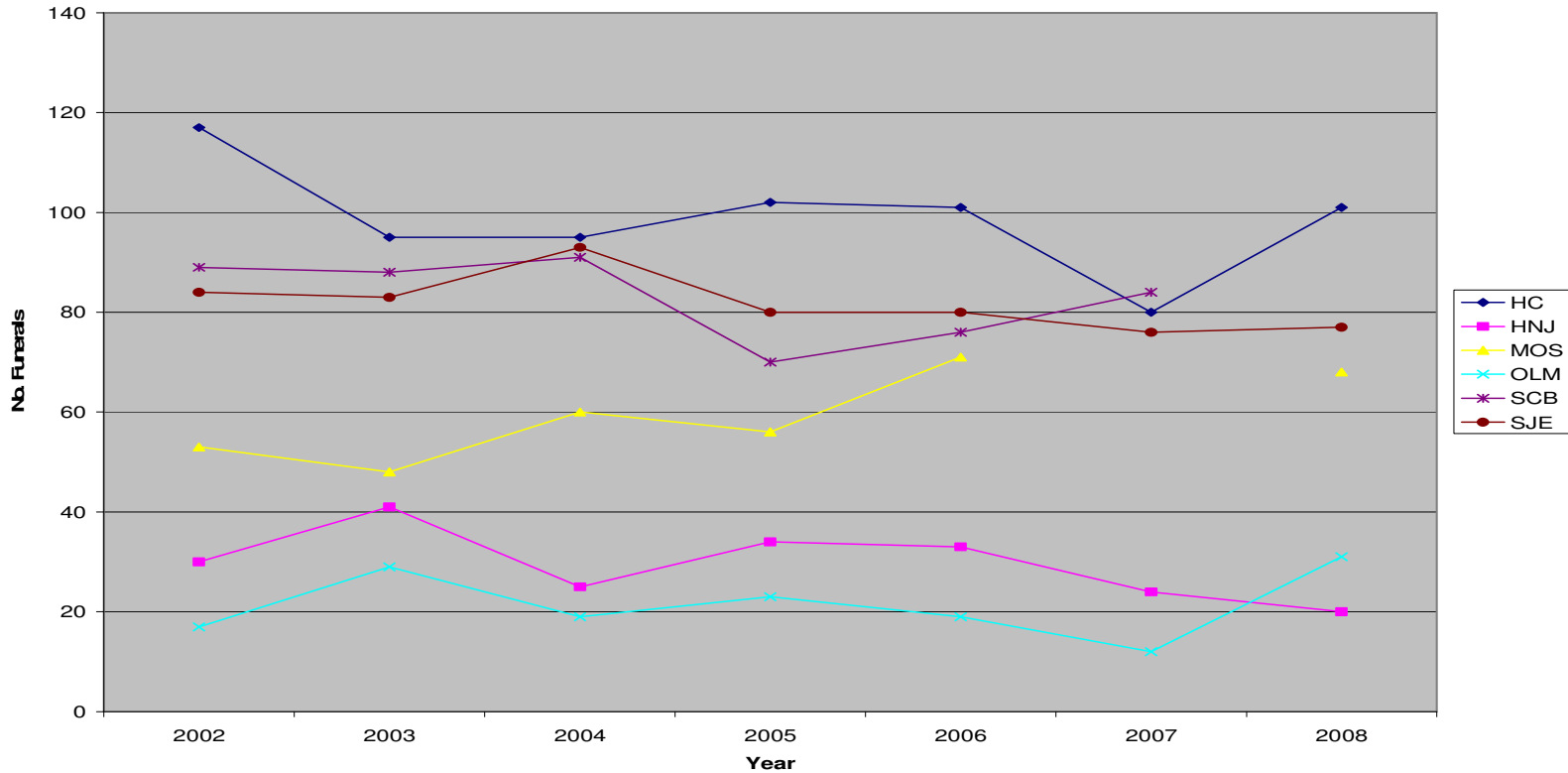


**Looking at the chart of EGC parish baptisms:**

- 1. Are there any discernible trends by parish (i.e. any parish which is trending upward or downward)?**
- 2. Are there any discernible differences in the number of baptisms among parishes (i.e. do any parishes have significantly more or fewer baptisms than the rest)?**



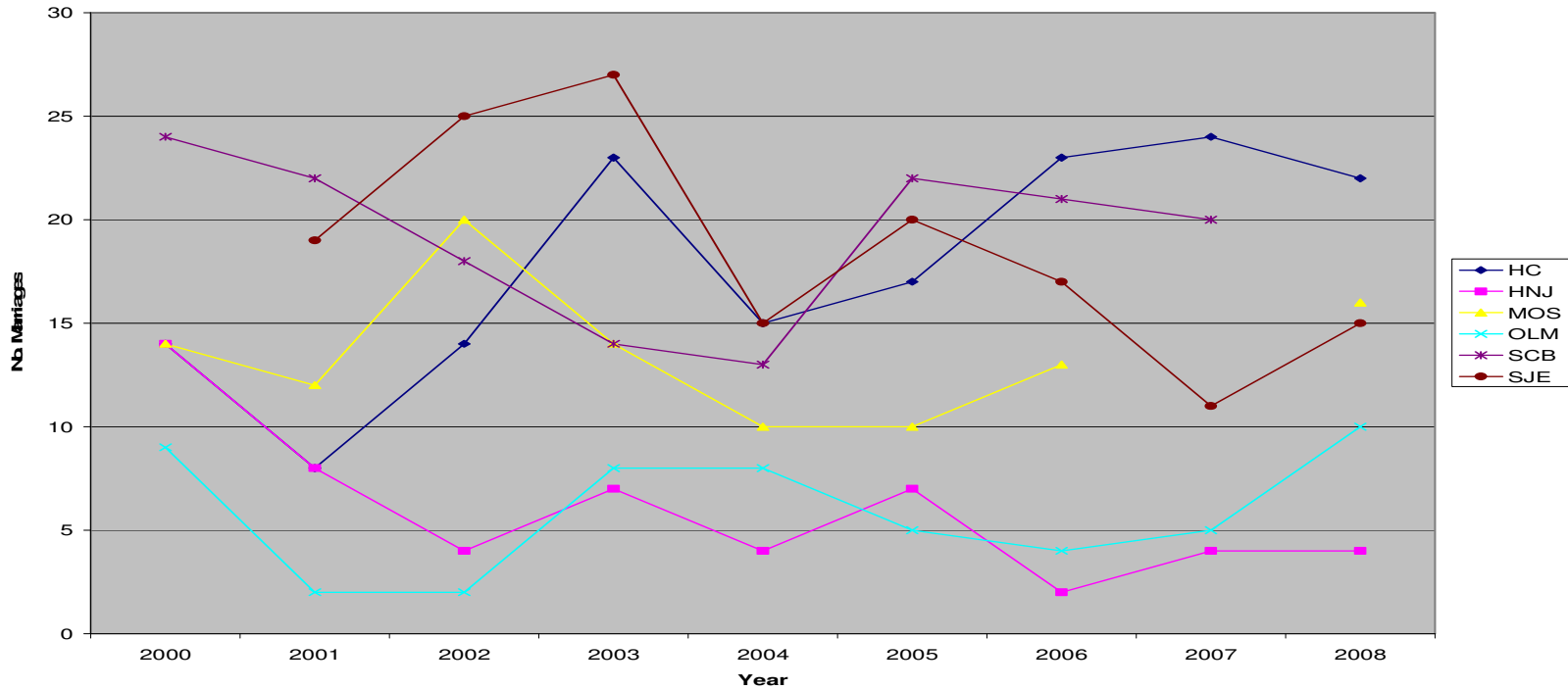
**Funerals by Parish 2000-2008**



**Looking at the chart of EGC parish funerals:**

- 1. Are there any discernible trends by parish (i.e. any parish which is trending upward or downward)?**
- 2. Are there any discernible differences in the number of funerals among parishes (i.e. do any parishes have significantly more or fewer funerals than the rest)?**

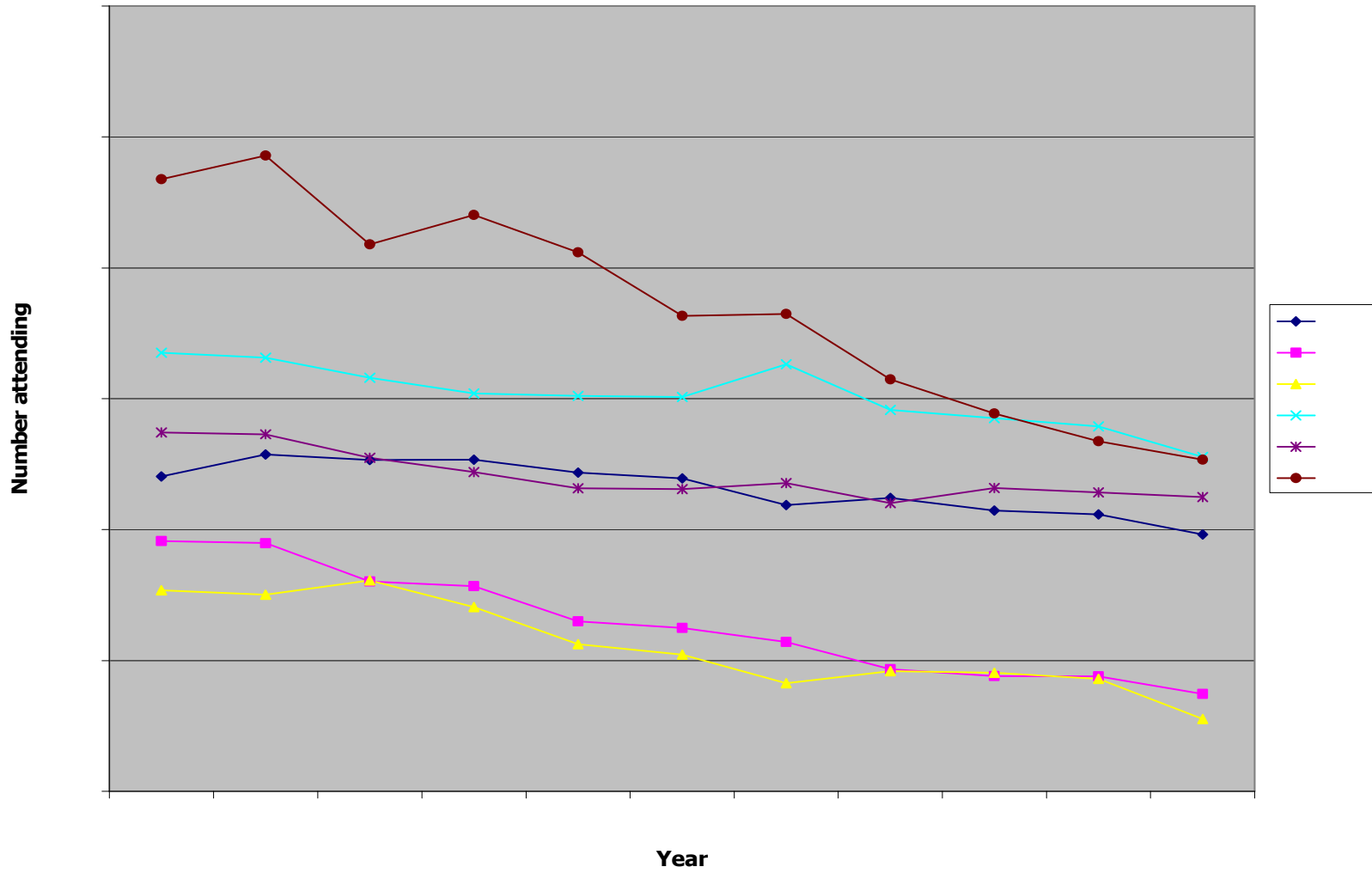
**Marriages by Parish 2000-2008**



**Looking at the chart of EGC parish marriages:**

- 1. Are there any discernible trends by parish (i.e. any parish which is trending upward or downward)?**
- 2. Are there any discernible differences in the number of marriages among parishes (i.e. do any parishes have significantly more or fewer marriages than the rest)?**

# October Mass Attendance by Parish



# % Change in Mass Attendance

